



INVEST
WITH US &
EARN UP TO
9% PAID
MONTHLY

QUALITY
INVESTMENTS
SINCE 1999

ILSL.COM.AU

**Ingwersen &
Lansdown**
SECURITIES
LIMITED

ACN: 088 636 220
AFSL: 241097

EXPERIENCE COUNTS

◆ Mortgage Investments since 1999 ◆

Our Experience

Since its inception in 1999 Ingwersen & Lansdown Securities Ltd has **invested in loans to the value of:**

\$2,024,890,553

The **on-completion value of the projects funded** by Ingwersen & Lansdown Securities Ltd equal to:

\$3,726,201,750

Interest rates as at March 2023



Additional notes:

- ▶ The fund is a contributory fund
- ▶ Investment rates will vary per project
- ▶ Eleven (11) current projects available to invest in
- ▶ Four (4) current projects fully funded

Where we invest



States funded



States not funded

For further details on current loan investment projects, please see pages 6-8 of this brochure or visit ilsl.com.au.

Minimum Investment & Current Opportunities

\$20,000
Min. investment

15 projects
Currently funded

How we invest your funds:

- ▶ Residential Construction Towers
- ▶ Residential Construction Town Houses
- ▶ Residential Construction Houses
- ▶ Commercial / Industrial Units
- ▶ Land Subdivisions & Land Banks (at reduced LVR)



*Artists' impression of current project

How to invest your funds:

1

**Read PDS &
Target Market
Determination
(TMD)**

2

**Complete
Application
(within PDS) and
TMD Form**

3

**Provide the
required ID**

4

**We confirm
acceptance into
the fund & provide
details as to
payment of your
investment**

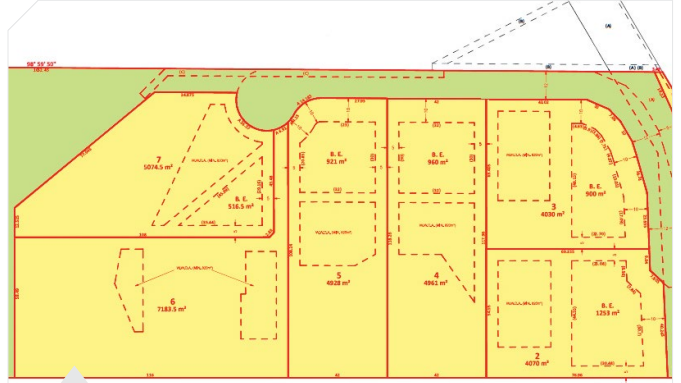
DISCLAIMER

Up to 9.0% per annum – paid monthly on first mortgage investments over \$500,000. For first mortgage investments of less than \$500,000 the higher distribution rate is up to 8.5% per annum paid monthly. Distribution rate displayed is the current rate for loan amounts on particular investments. Investment rates vary according to each investment and are contained within the Supplementary Product Disclosure Statement (SPDS). Ingwersen & Lansdown Securites Limited AFSL 241097 (ILSL) is the issuer of the Product Disclosure Statement (PDS) for the Ingwersen & Lansdown Securites Fund ARSN 089 634 453 (Fund). Investors should obtain and consider the PDS and SPDS, available at www.iisl.com.au, including the risks outlined in the PDS and SPDS before making any investment decision. An investment with ILSL is not a bank deposit. Past performance is not an indicator of future performance and there is a risk you may receive lower than expected returns. No person guarantees the repayment of any capital or the payment of any income from the Fund or the performance of the Fund generally. See our Target Market Determination at www.iisl.com.au.

Current Funded Projects



Construction of Six (6) Duplexes.
Burleigh, QLD



Land Subdivision, Six (6) Lots.
Maroota, NSW



Construction of Four (4) Townhouses.
Preston, VIC



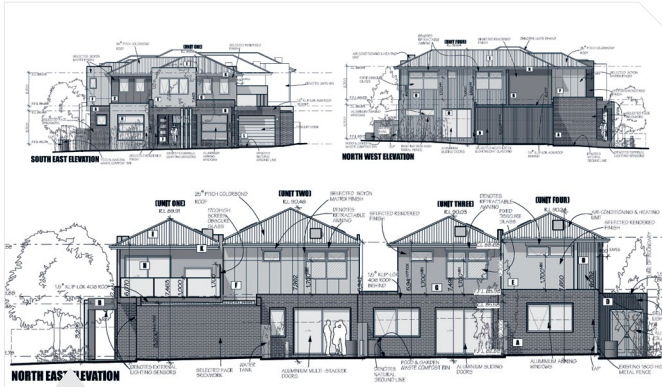
Construction of Nine (9) Dwellings.
Moorebank, NSW



Construction of 122 Units.
Hope Island, QLD



Land Subdivision of 17 Lots.
Bahrs Scrub, QLD



Construction of Four (4) Dwellings.
Keilor Downs, VIC



Construction of Nine (9) Dwellings.
Morayfield, QLD



Construction of 63 units.
Hope Island, QLD



Construction of 39 Residential Apartments and
Two (2) Medical Suites, 101 Car Parks. **Caringbah, NSW**

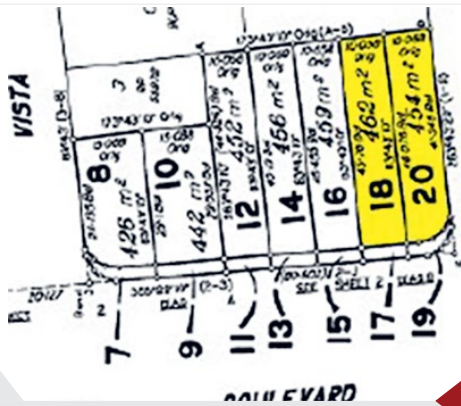


Construction of Two (2) Dwellings.
Bilambil Heights, NSW



Construction of 22 Units.
Asquith, Sydney

**FULLY
FUNDED**



FULLY
FUNDED

Land Bank of two blocks.
Surfers Paradise, QLD



FULLY
FUNDED

Construction of five units.
Tugun, Gold Coast

NOTE: The images of projects within this document are
Artists' impressions and drafts for marketing purposes only.



FULLY
FUNDED

Construction of 106
Townhouse Estate (stages 1 – 4). Raceview, QLD

Ingwersen & Lansdown
SECURITIES
LIMITED

ACN: 088 636 220
AFSL: 241097

Ingwersen & Lansdown Securities
Limited is an unlisted public
company specialising in First
Mortgage Investments.



Ph: +61 7 5589 2666
Fax: +61 7 5534 2838



e: invest@ingwersen.com.au
www.iisl.com.au



Cnr Gold Coast Highway and
Palm Beach Avenue
Palm Beach, Queensland, 4221